



Labor market and poverty in Argentina. A NTA perspective

Jorge A. Paz

IELDE - Seminar No 23, December 20, 2012

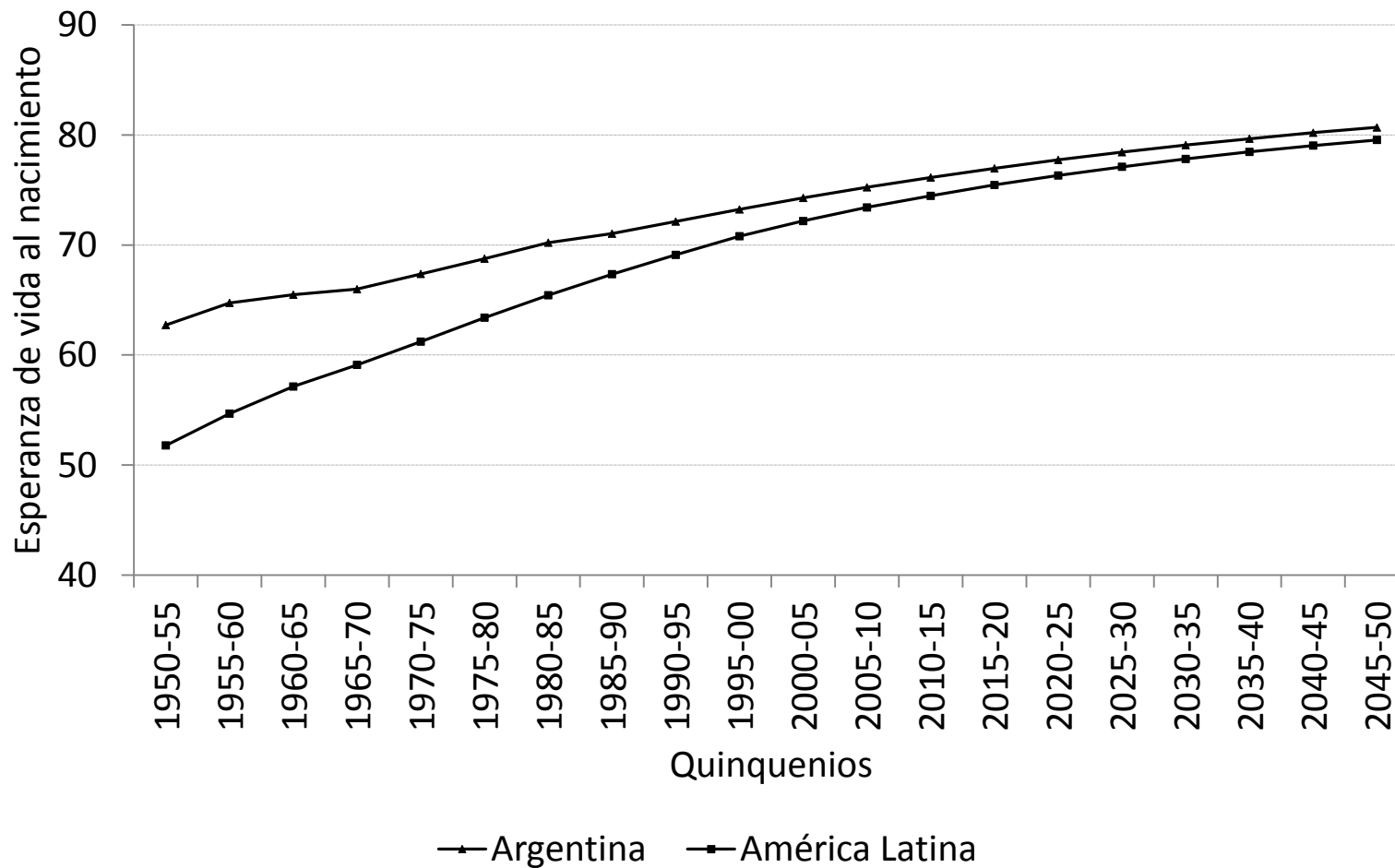
Índice de la presentación

- Una mirada de las tendencias de población
- Qué son las Cuentas Nacionales de Transferencia
- Estimaciones preliminares para Argentina
- Usando la metodología NTA para estudiar pobreza
- Pasos a seguir de aquí en más

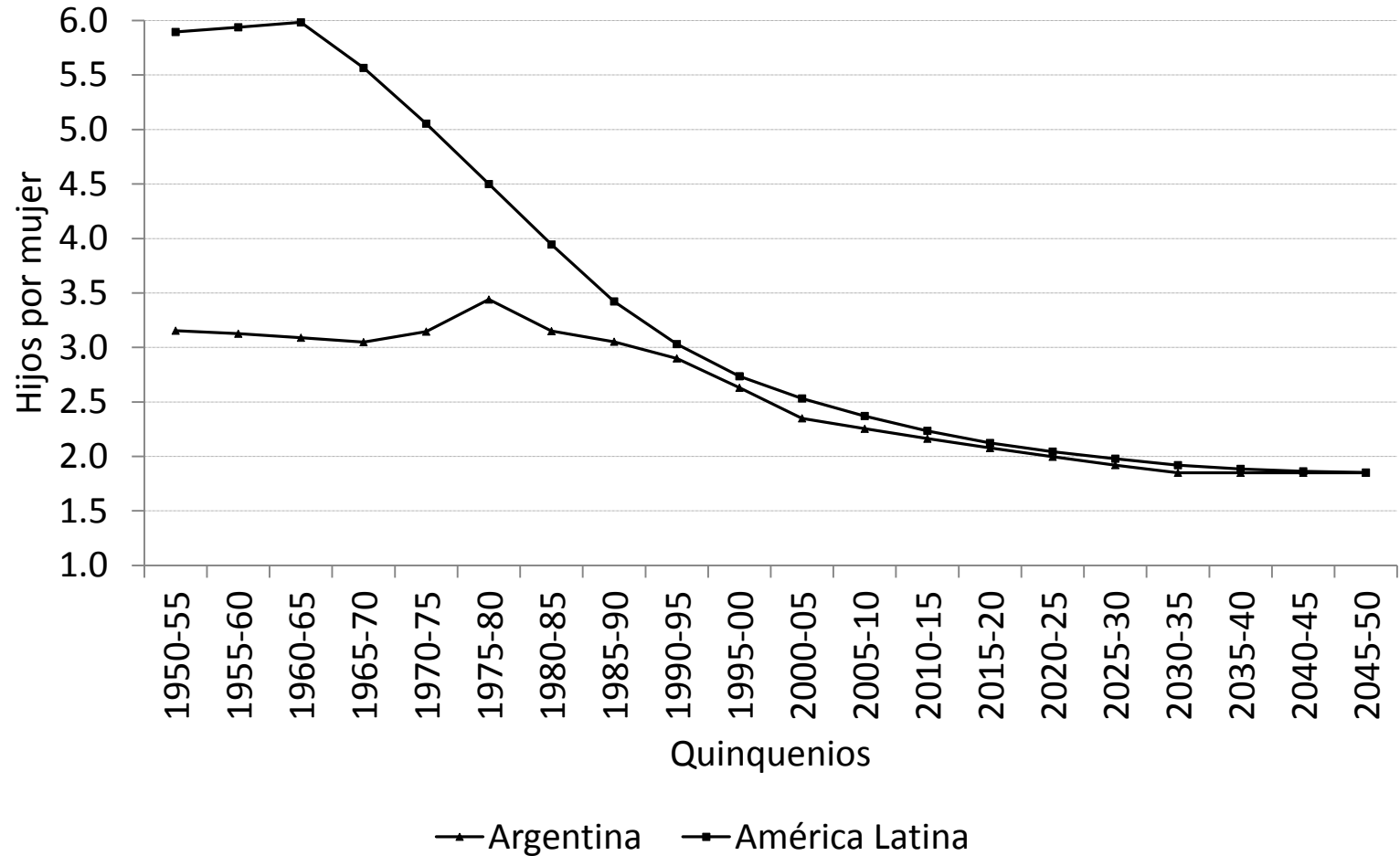
Índice de la presentación

- **Una mirada de las tendencias de población**
- Qué son las Cuentas Nacionales de Transferencia
- Estimaciones preliminares para Argentina
- Usando la metodología NTA para estudiar pobreza
- Pasos a seguir de aquí en más

Longevity evolution, 1950-2050

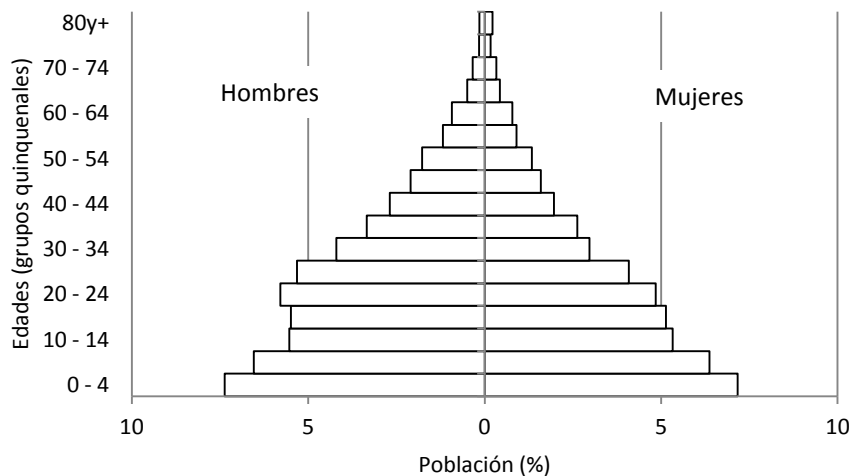


Fertility evolution

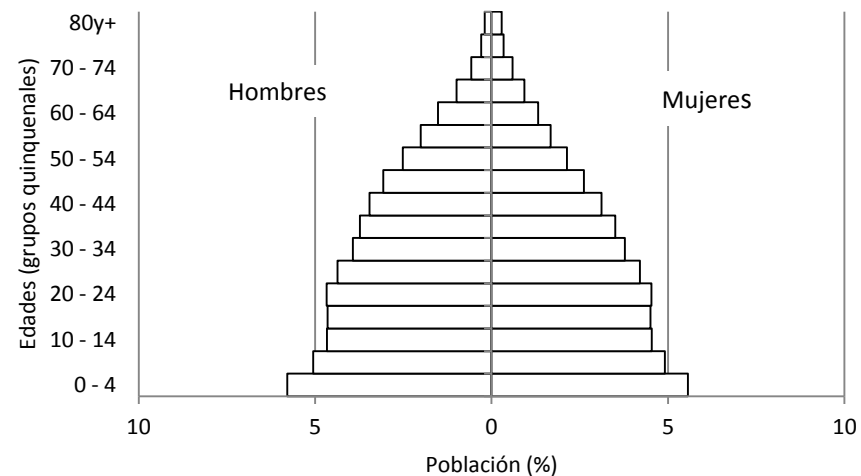


Argentina: Population Structure 1914-2050

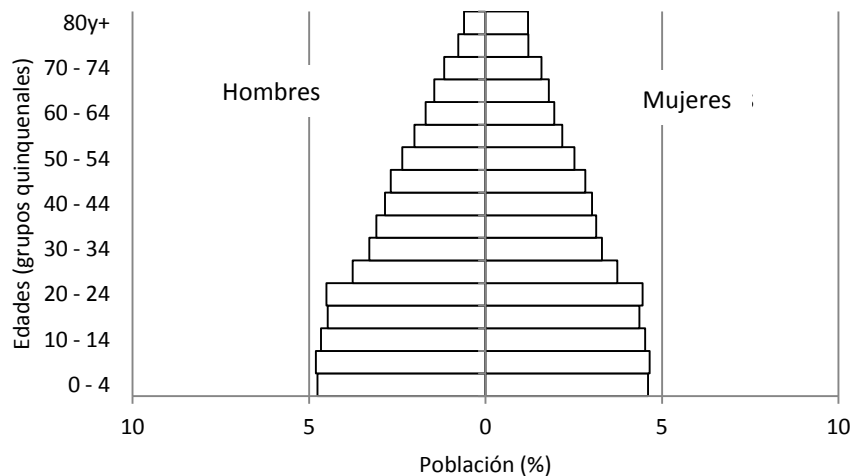
1914



1950



2000

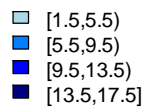
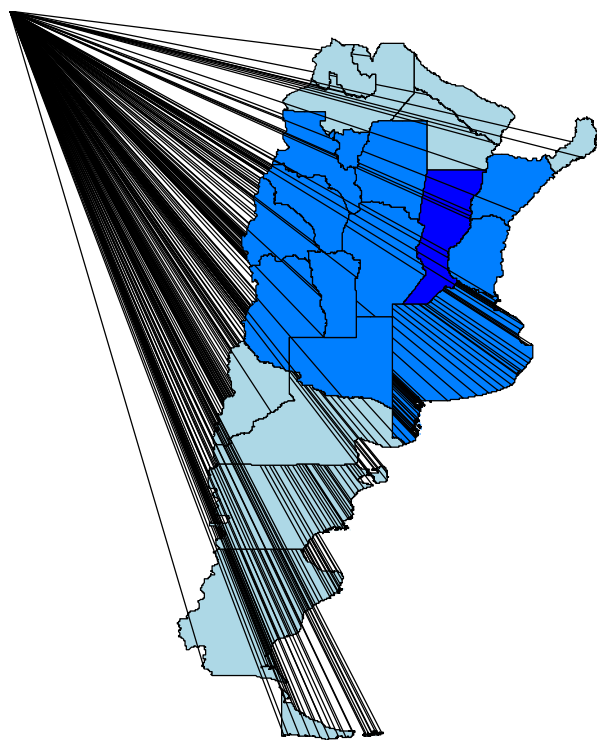


2050

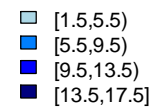
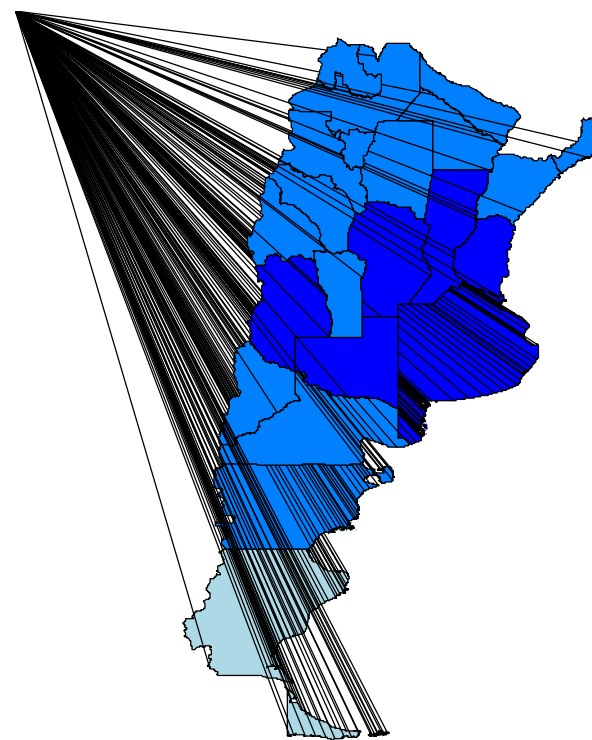


Argentina. Aging population by province

1980



2010



Índice de la presentación

- Una mirada de las tendencias de población
- **Qué son las Cuentas Nacionales de Transferencia**
- Estimaciones preliminares para Argentina
- Usando la metodología NTA para estudiar pobreza
- Pasos a seguir de aquí en más

The goal

Improve our understanding of how changes in population age structure are influencing national economies.

Help answer important questions

- Who in the population earns income from labor, and how much do they earn?
- How much do people at every age consume?
- How do young and old people, who consume more than they produce, support themselves—do they rely on their families, on taxpayers through government programs, or in the case of the elderly, on their own savings and investment?

Help answer important questions

- Are public pension and healthcare programs sustainable?
- Will tax payers be able —and willing— to provide financial support for growing numbers of old people?
- Will the expansion of elderly populations slow economic growth?
- What are the likely impacts of population aging on social and economic inequality?

The project

- **NTA Coordinators:** Ronald Lee and Andrew Mason.
- **Institutions:** University of California at Berkeley and the Population and Health Studies Program, East-West Center.
- **Support:** U.S. National Institute on Aging; the John D. and Catherine T. MacArthur Foundation; IDRC, UNFPA.
- **Argentine Team:** Pablo Comelatto, Rafael Rofman and Jorge Paz.

NTA regions and members as of late 2010

Asia-Pacific	The Americas	Europe	Africa
Australia	Argentina	Austria	Kenya
China	Brazil	Finland	Mozambique
India	Canada	France	Nigeria
Indonesia	Chile	Germany	Senegal
Japan	Colombia	Hungary	South Africa
Philippines	Costa Rica	Slovenia	
South Korea	Jamaica	Sweden	
Taiwan	Mexico	United Kingdom	
Thailand	Peru		
	United States		
	Uruguay		

Índice de la presentación

- Una mirada de las tendencias de población
- Qué son las Cuentas Nacionales de Transferencia
- **Estimaciones preliminares para Argentina**
- Usando la metodología NTA para estudiar pobreza
- Pasos a seguir de aquí en más

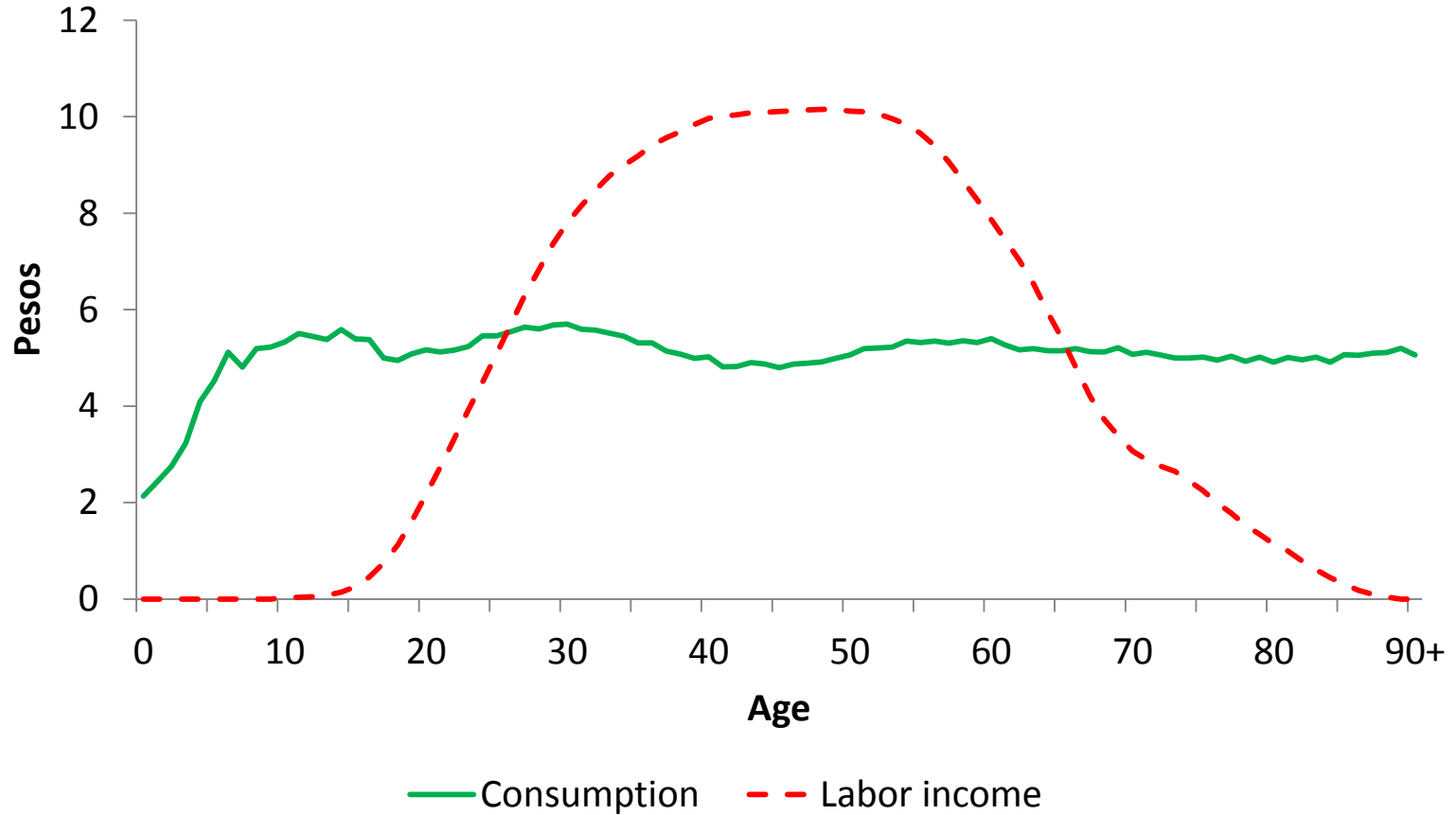
Las identidades contables básicas

$$Y_x^l + Y_x^a + T_x^+ = C_x + S_x + T_x^-.$$

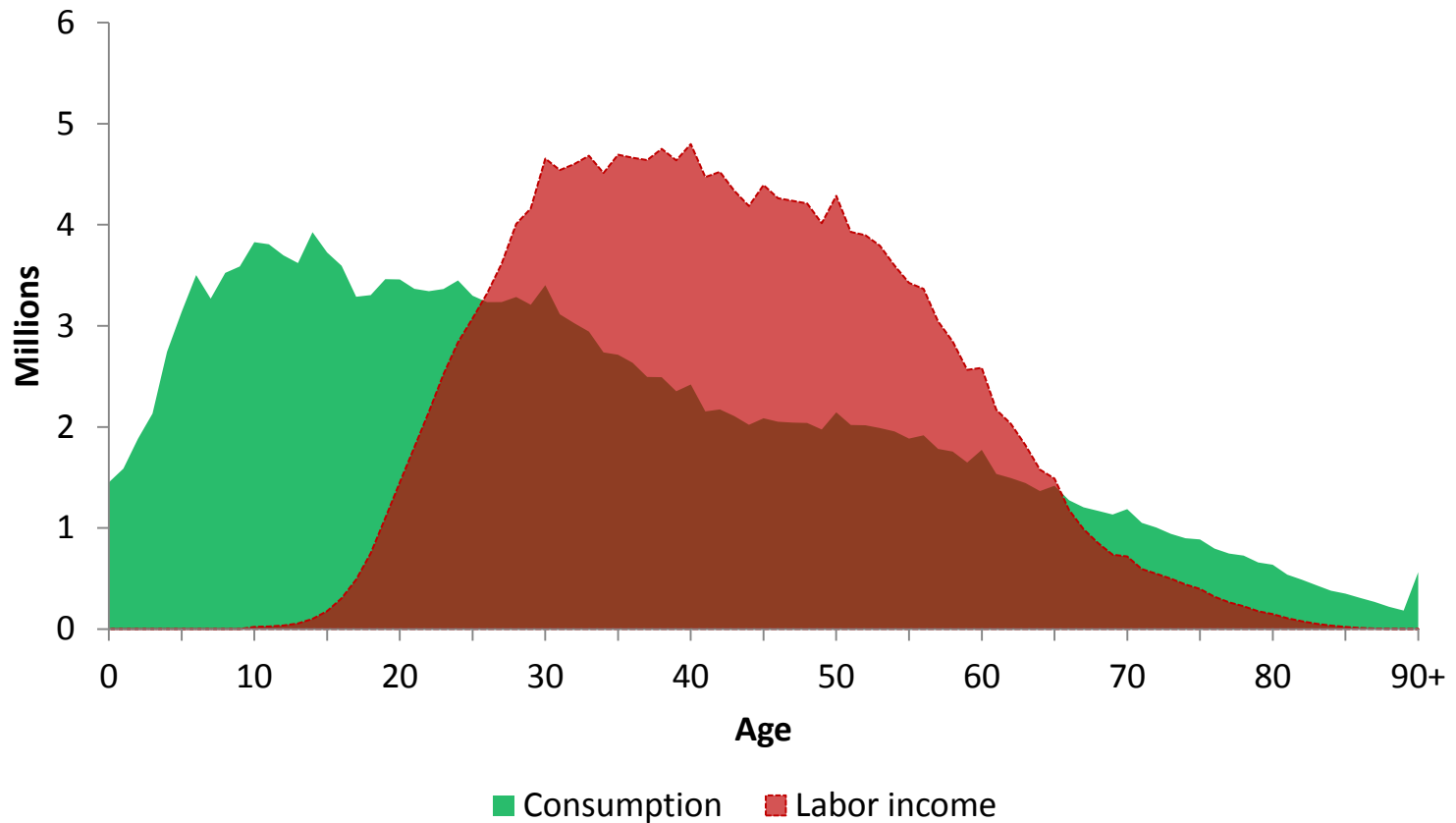
$$C - Y^l = (Y^a - S) + (T^+ - T^-).$$

Per-capita labor income and consumption

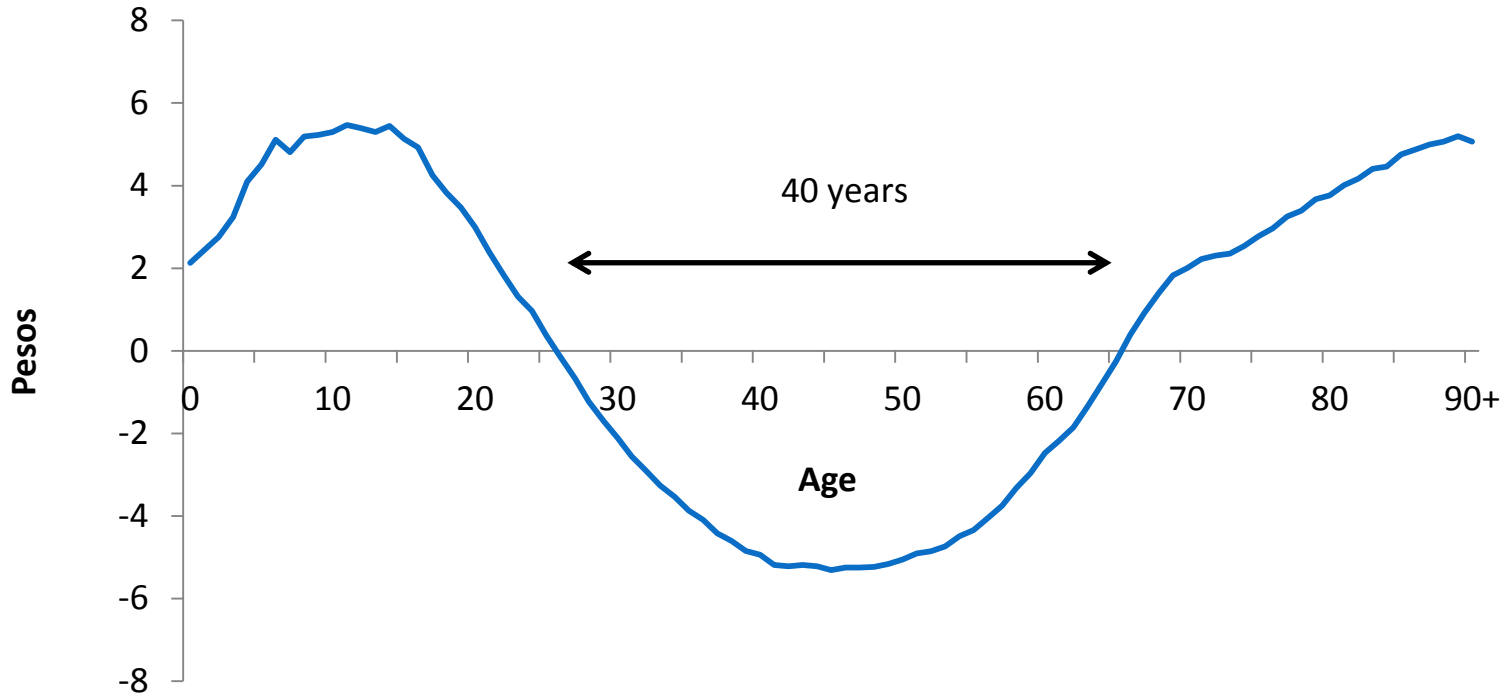
Argentina, 2004-2005



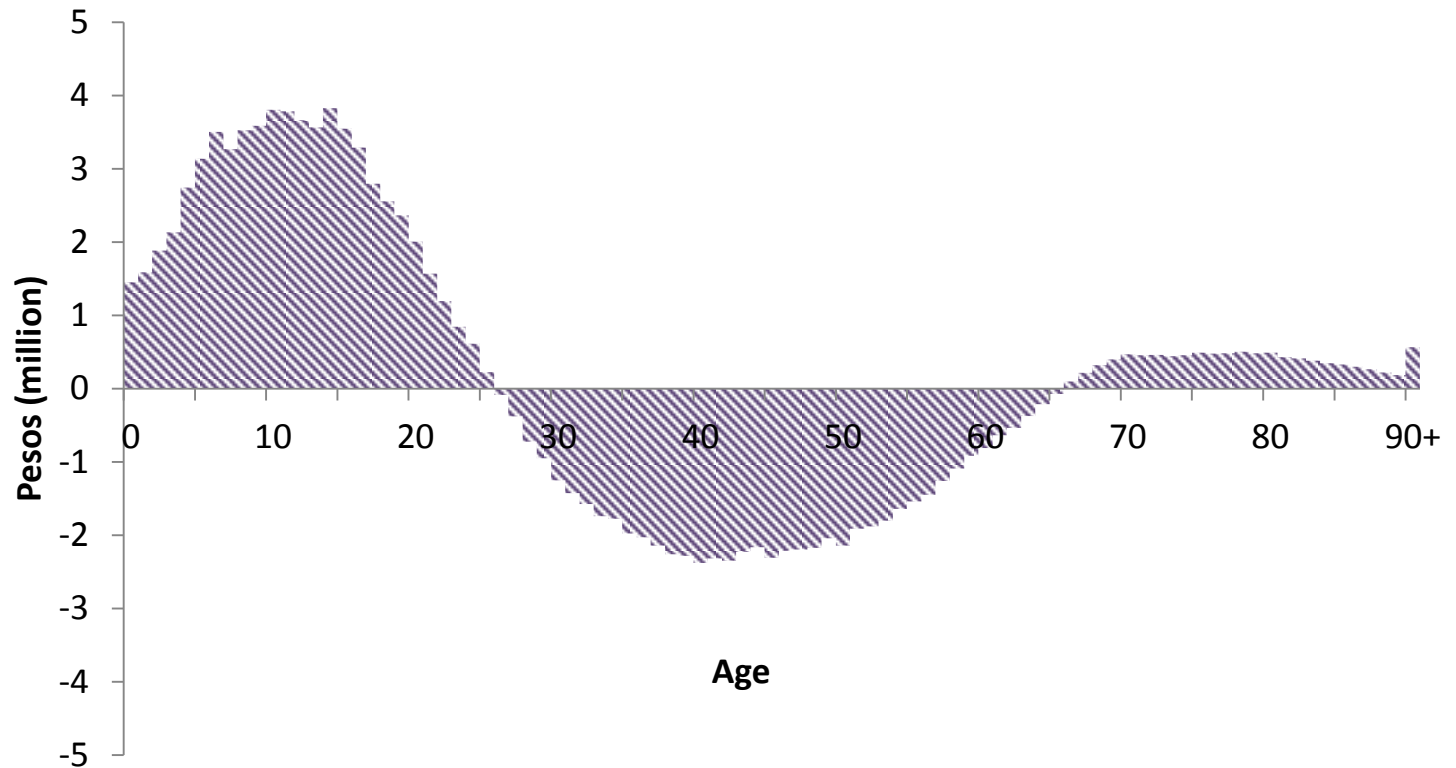
Aggregate labor income and consumption by age. Argentina, 2004-2005



Per-capita lifecycle deficit. Argentina, 2004-2005



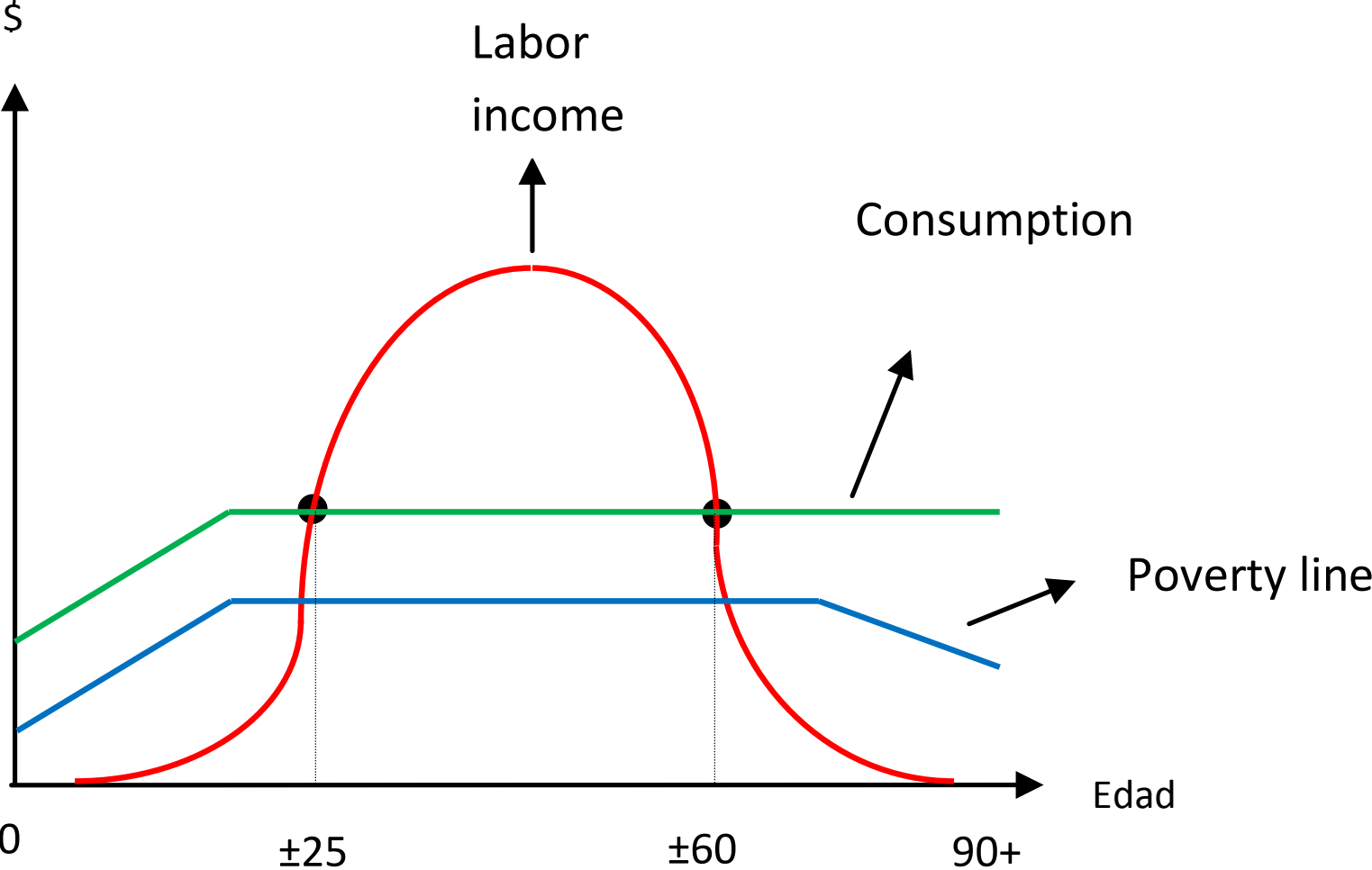
Aggregate lifecycle deficit. Argentina, 2004-2005



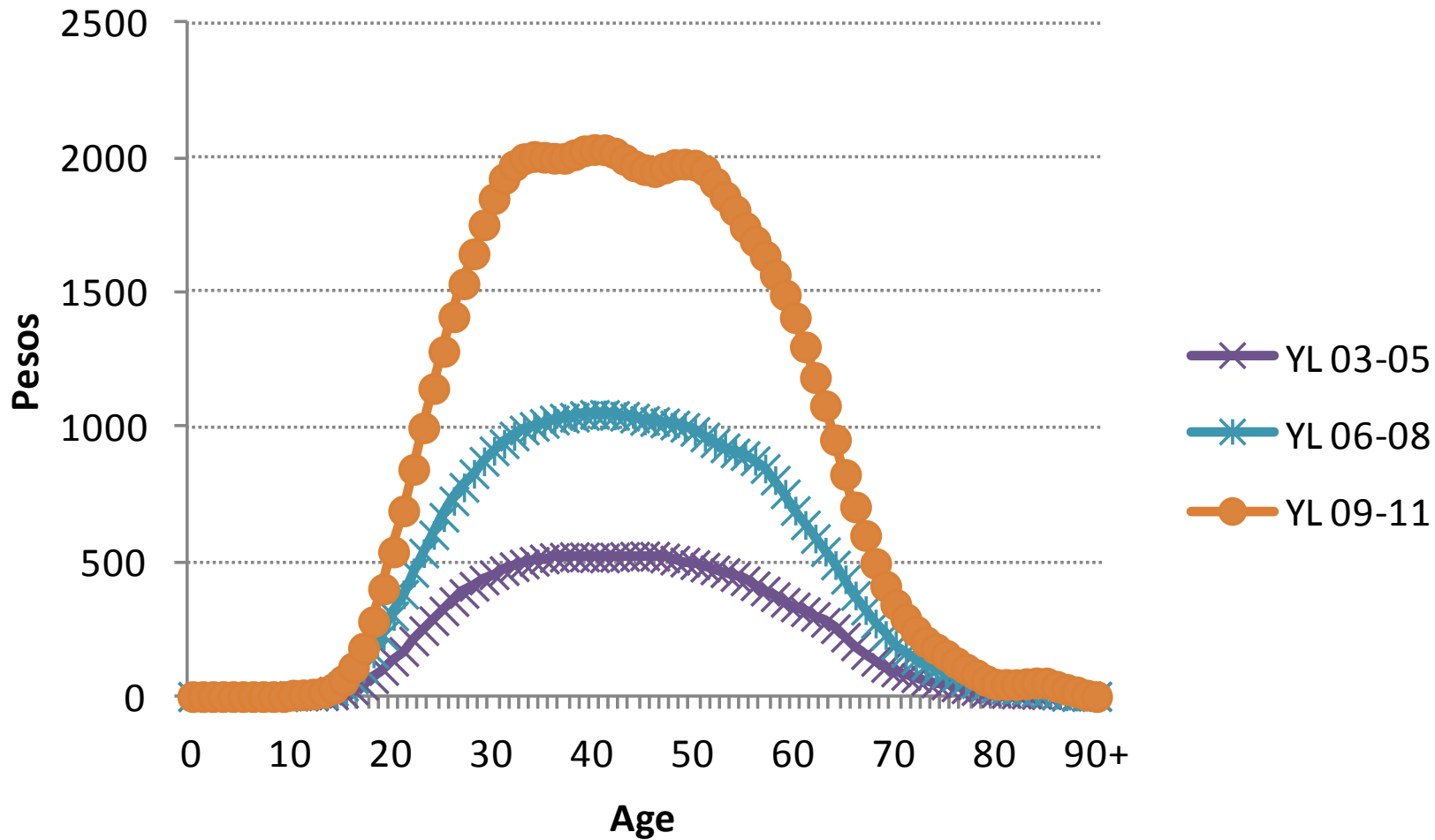
Índice de la presentación

- Una mirada de las tendencias de población
- Qué son las Cuentas Nacionales de Transferencia
- Estimaciones preliminares para Argentina
- **Usando la metodología NTA para estudiar pobreza**
- Pasos a seguir de aquí en más

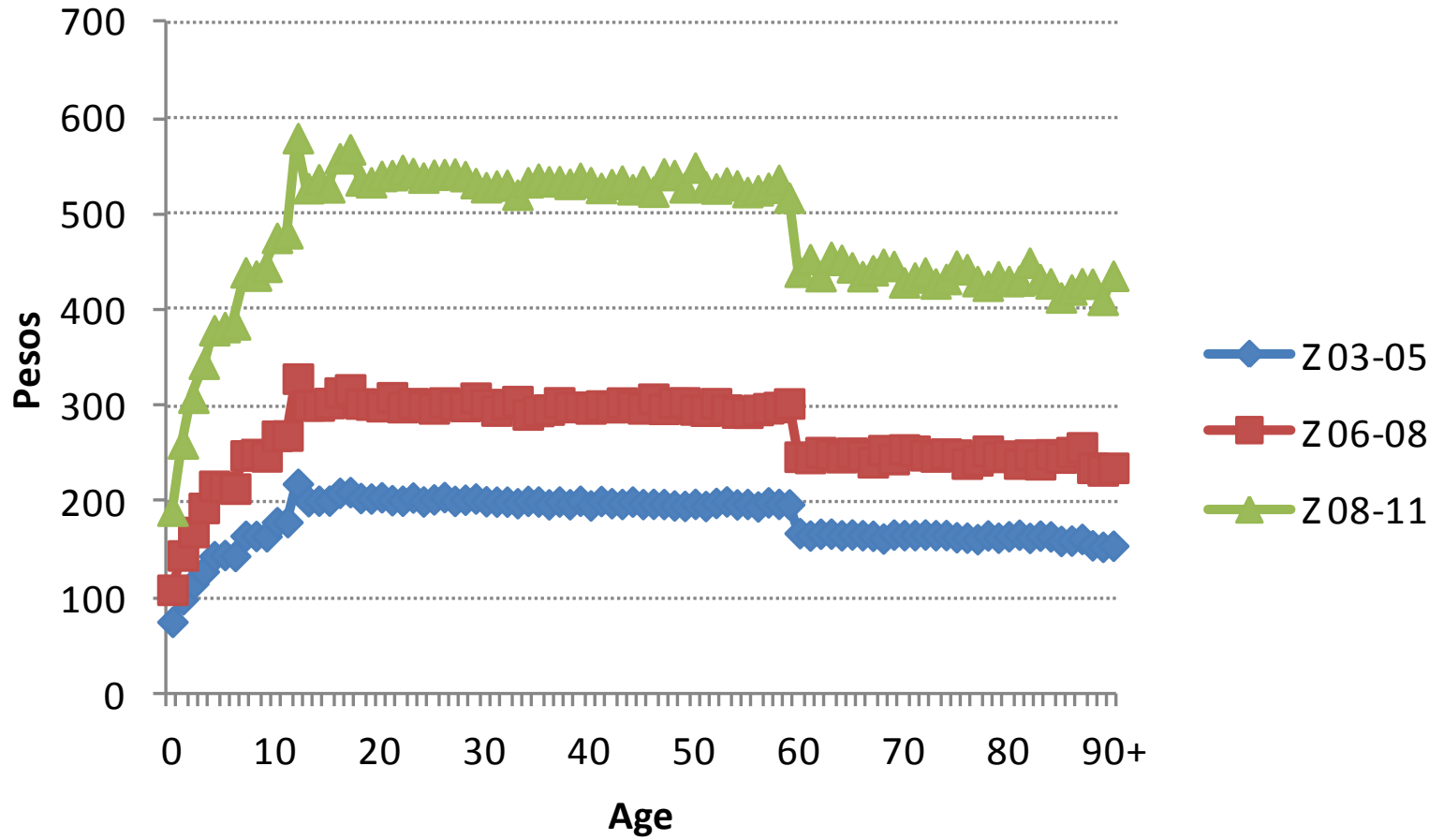
Labor income, consumption and poverty



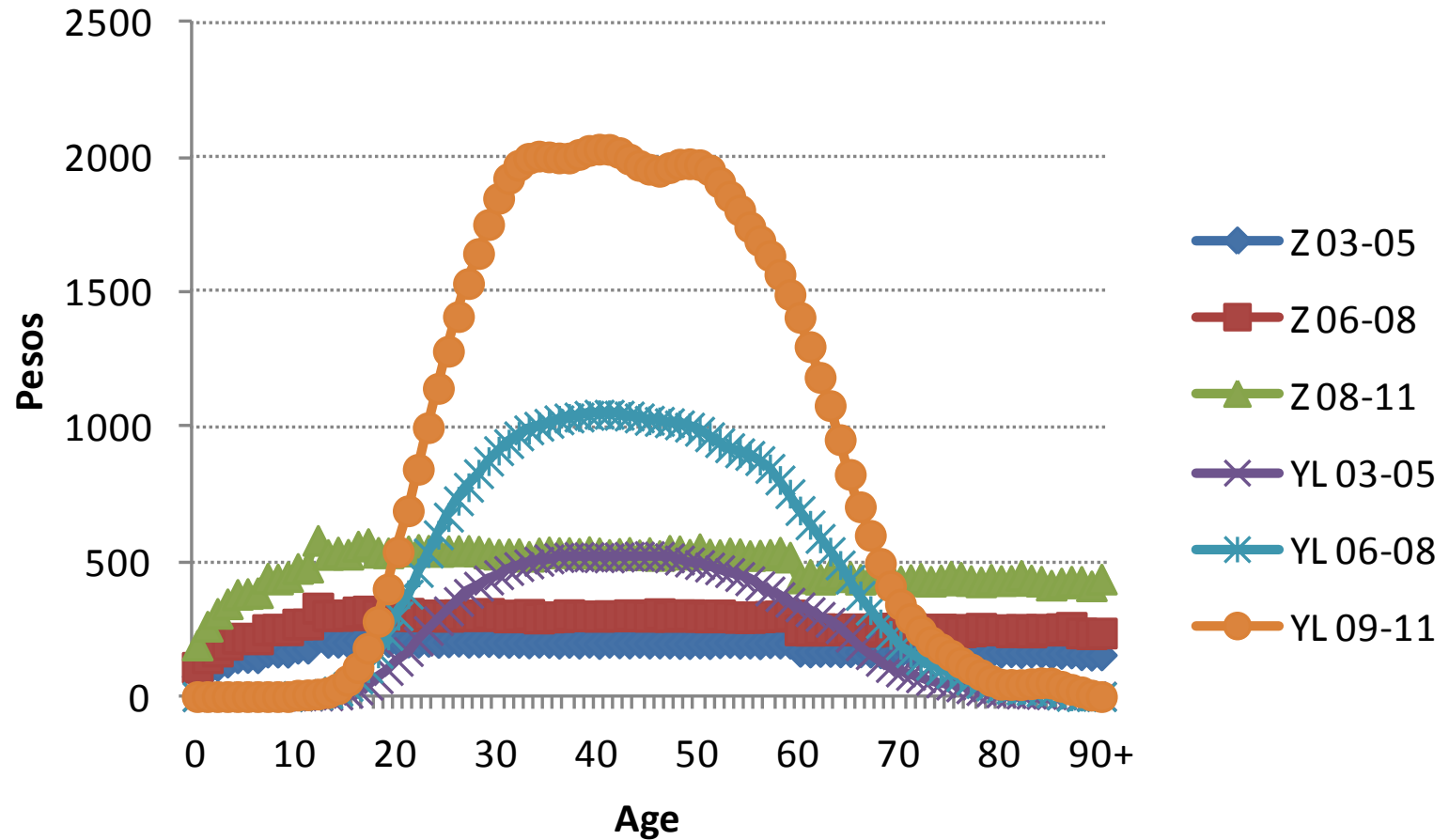
Labor income by age (\$)



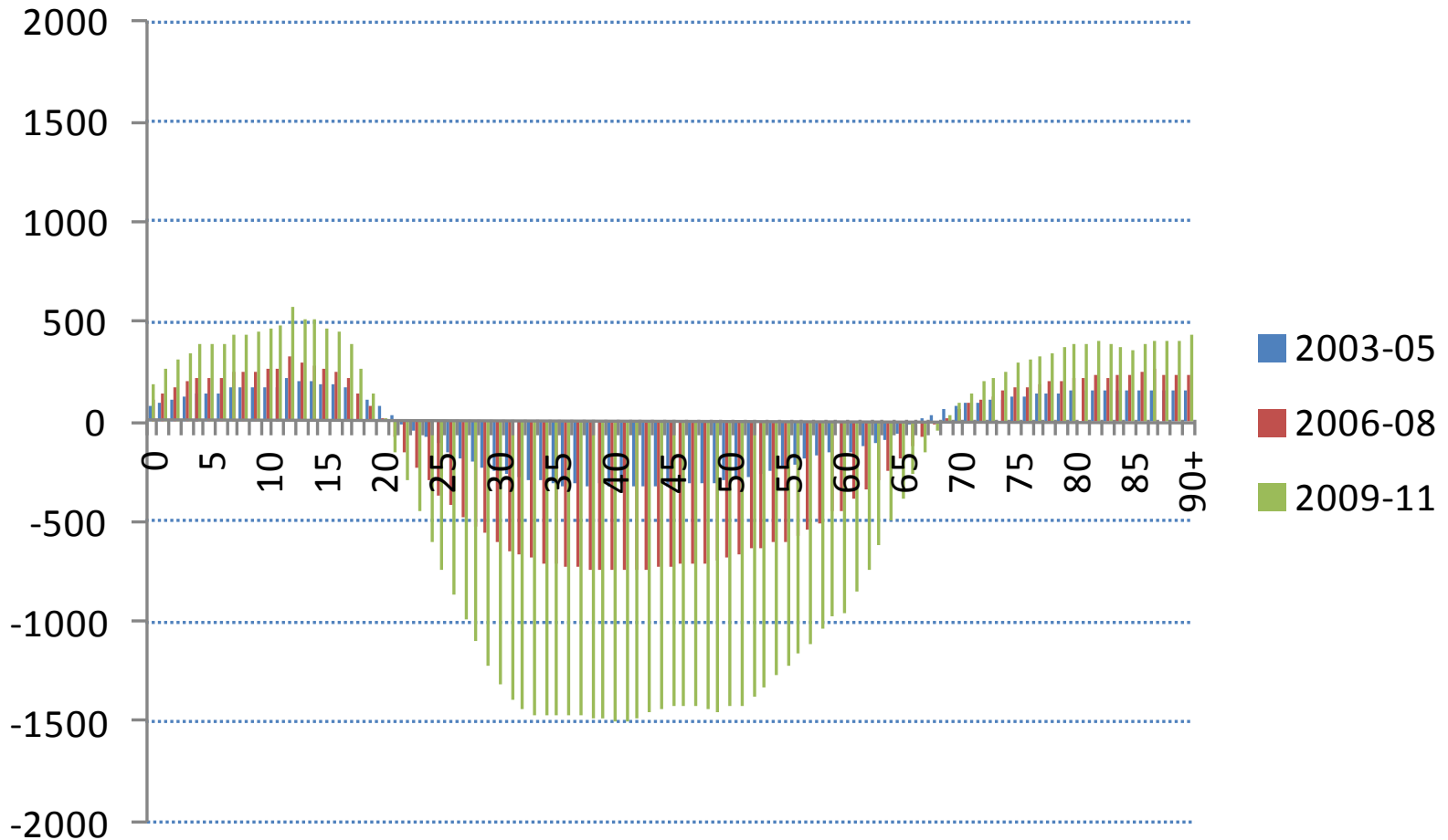
Poverty line by age (\$)



Labor income and poverty line by age (\$)

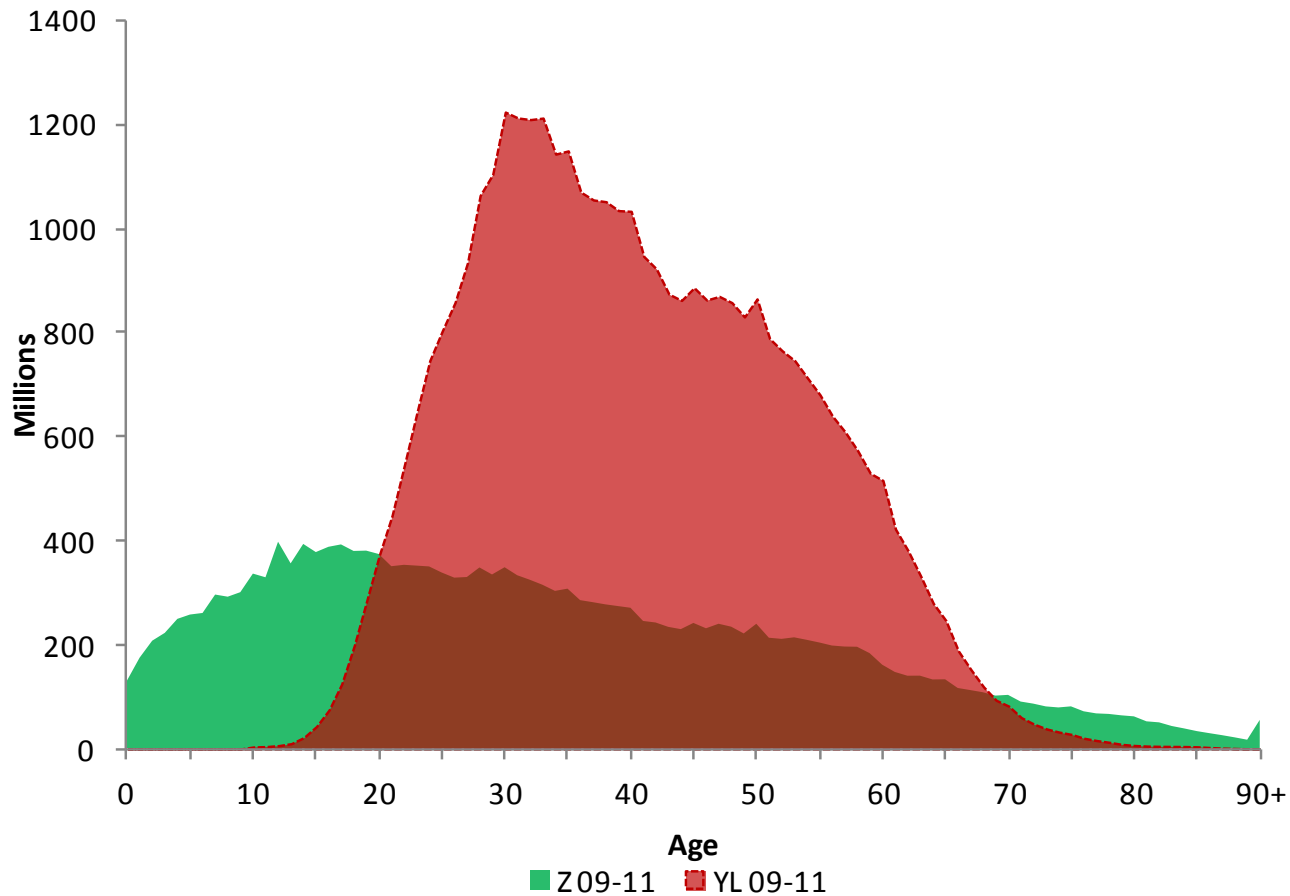


Per-capita lifecycle deficit. Argentina, 2003-2011

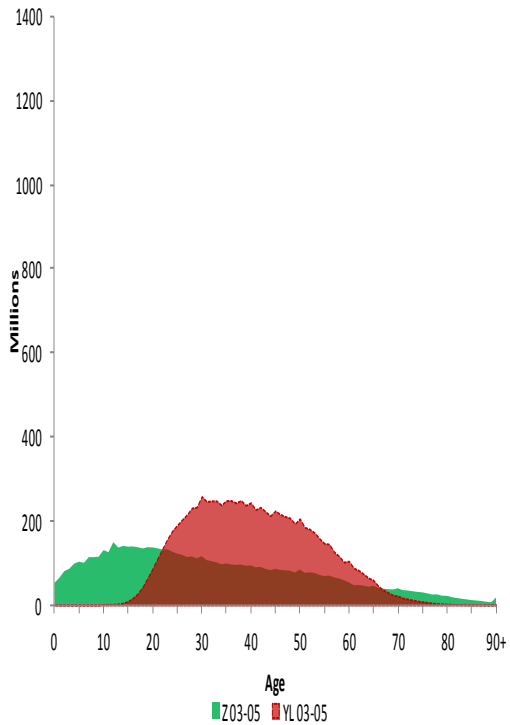


Aggregate labor income and poverty line by age (\$)

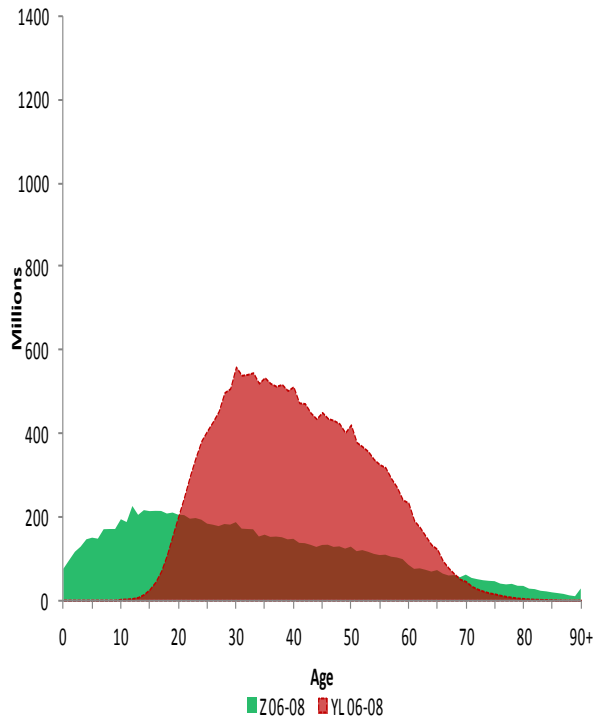
Argentina, triennium 2009-2011



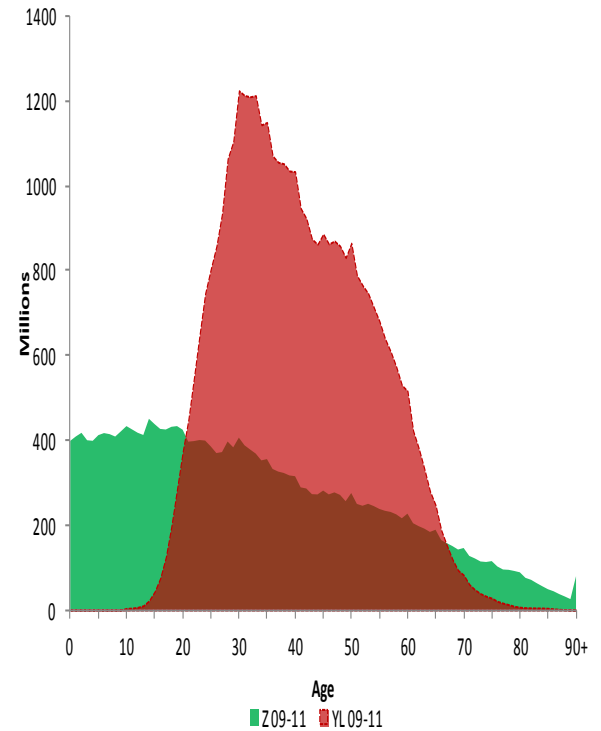
Aggregate labor income and poverty line by age (\$)



2003-2005

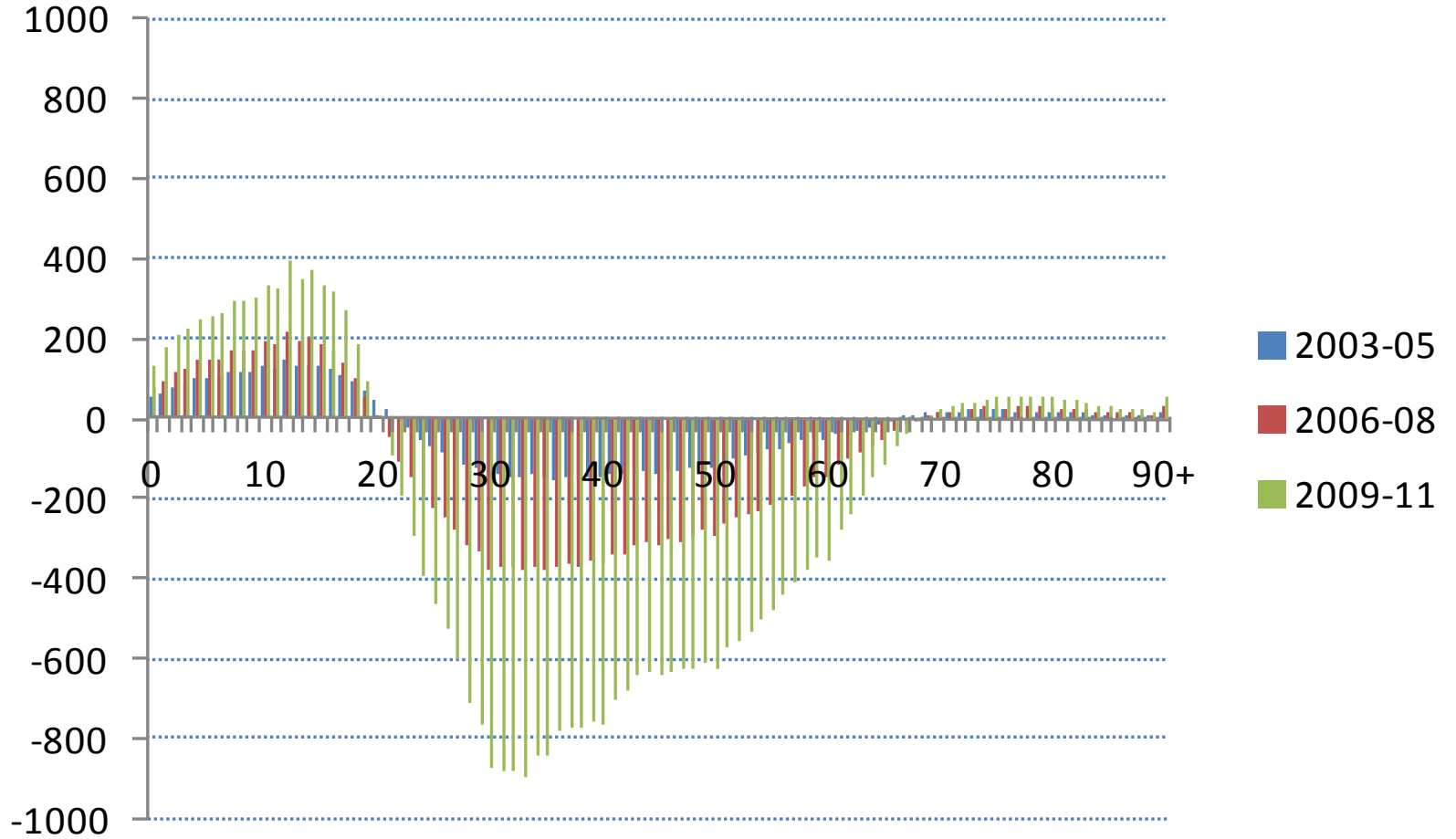


2006-2008

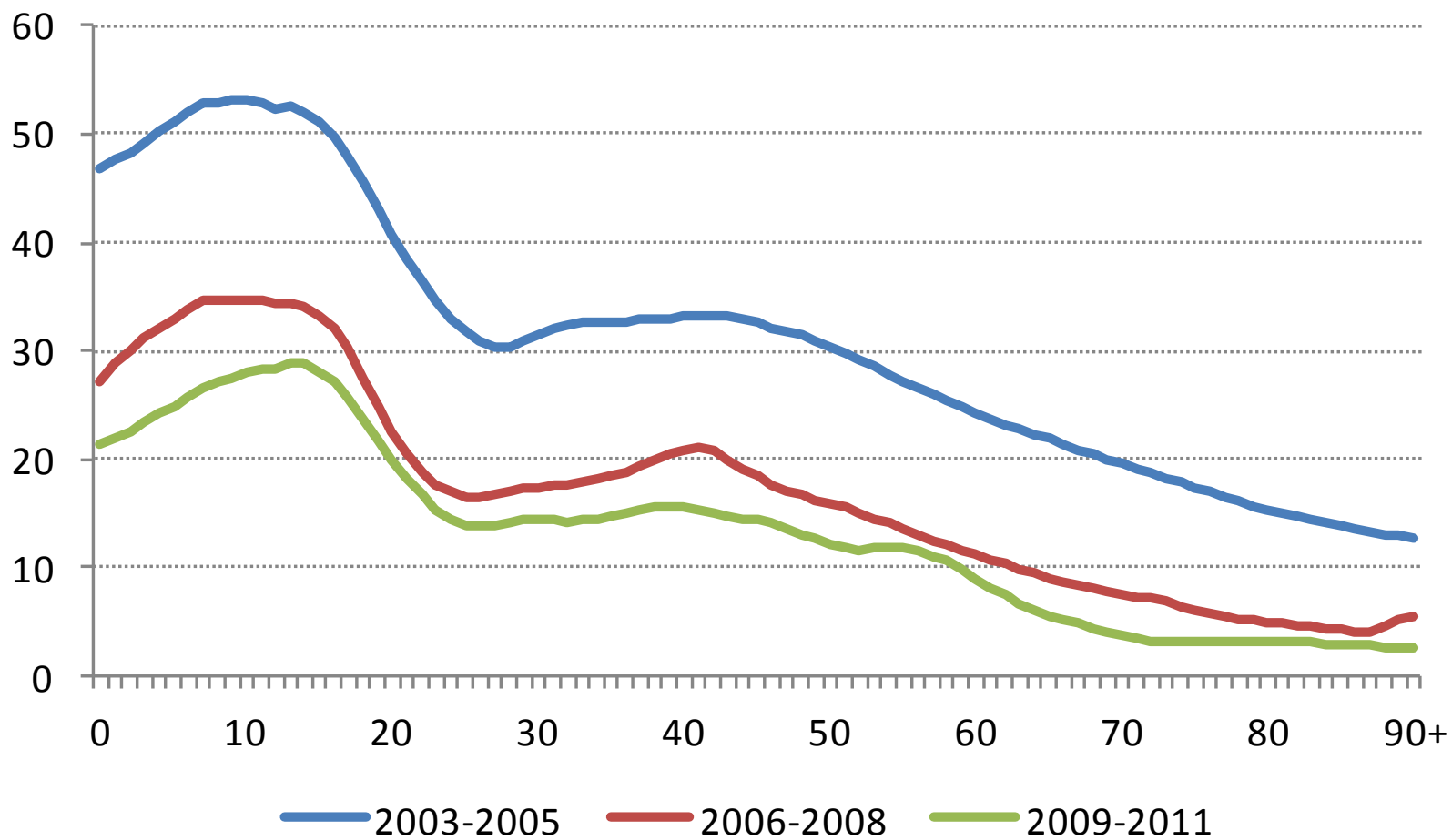


2009-2011

Aggregate lifecycle deficit. Argentina, 2003-2011



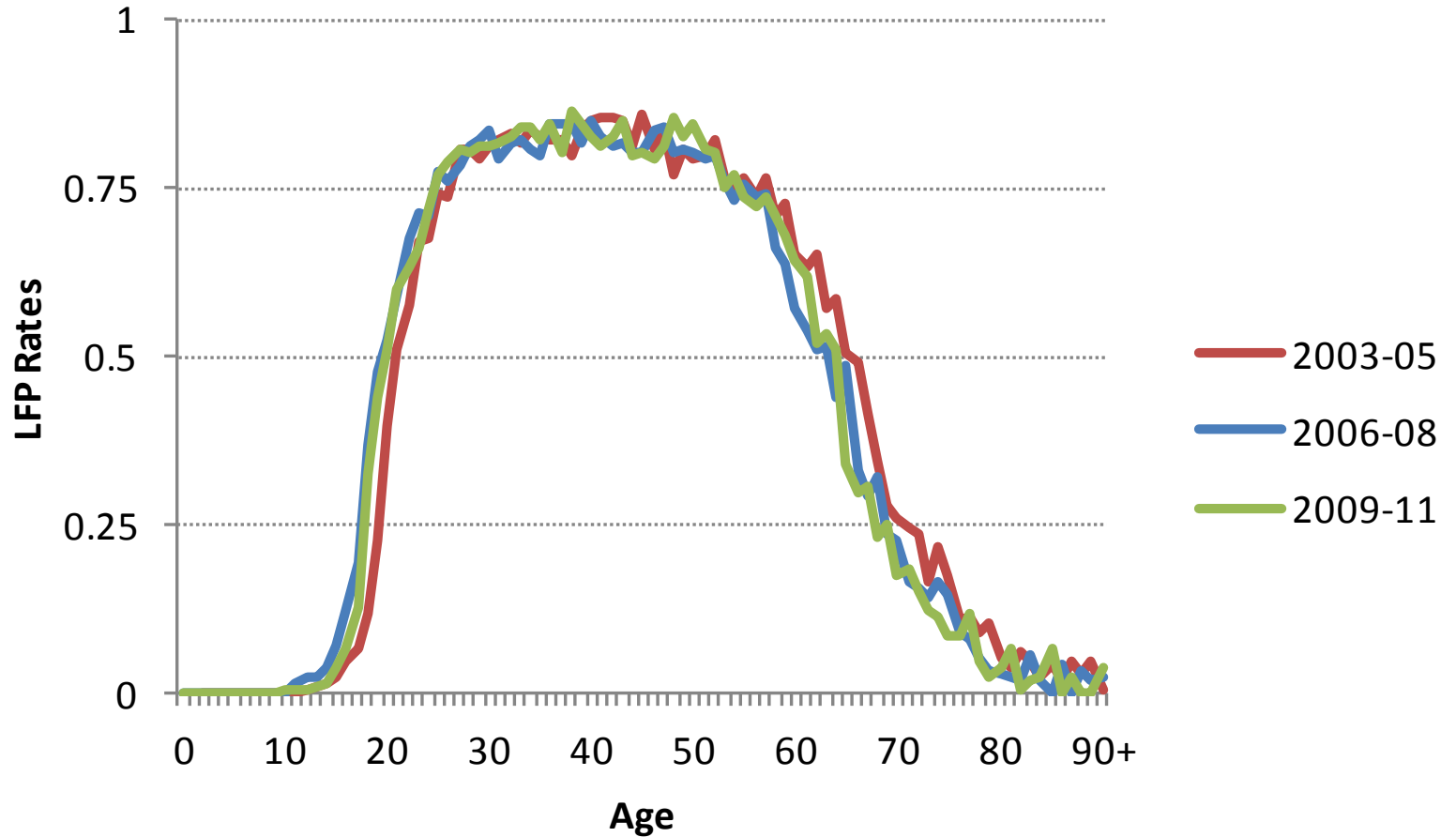
Poverty profiles by age. Argentina, 2003-2011



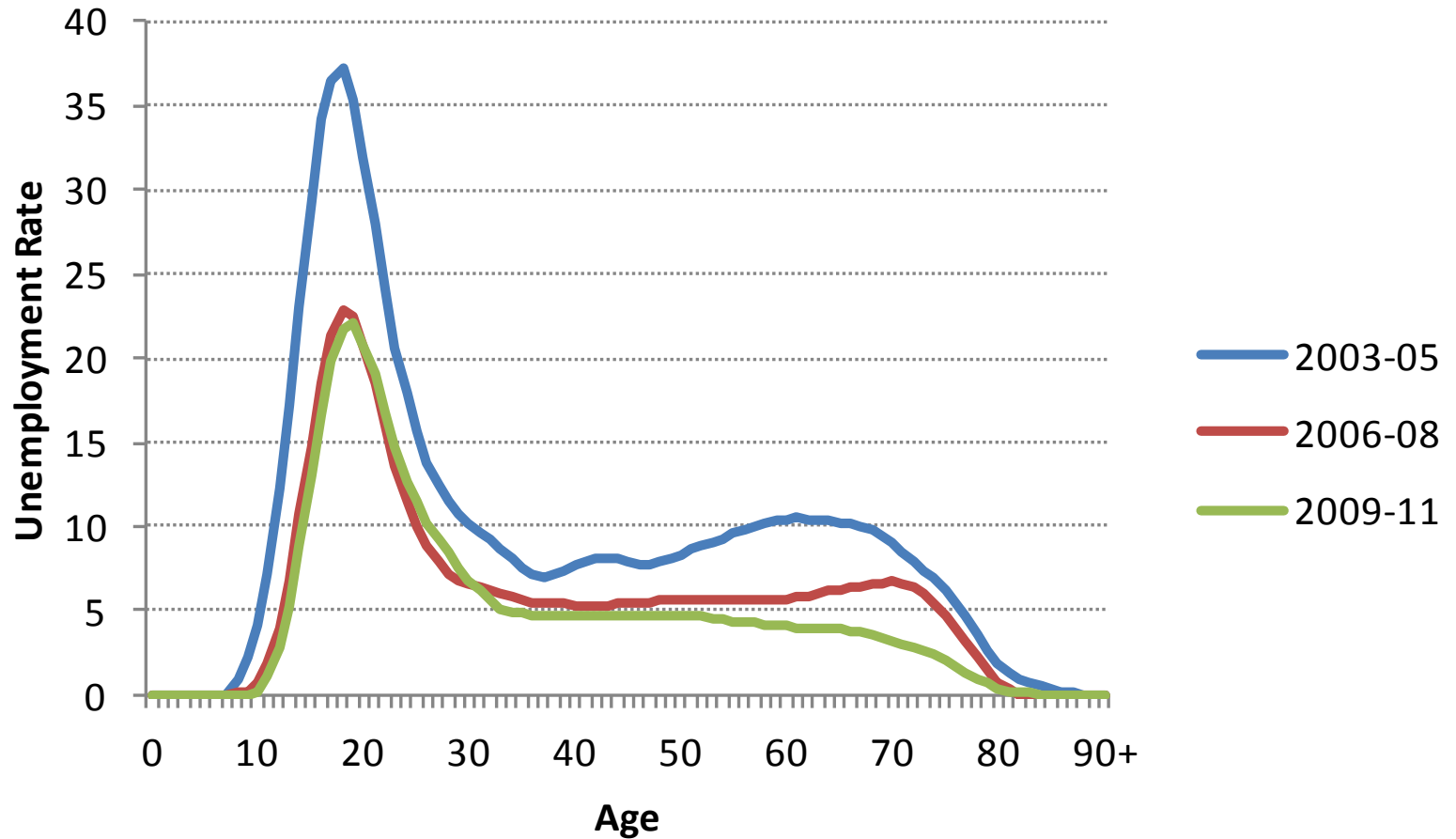
Labor income reflects

- Labor force participation
- Unemployment rates
- Hours worked
- Wages

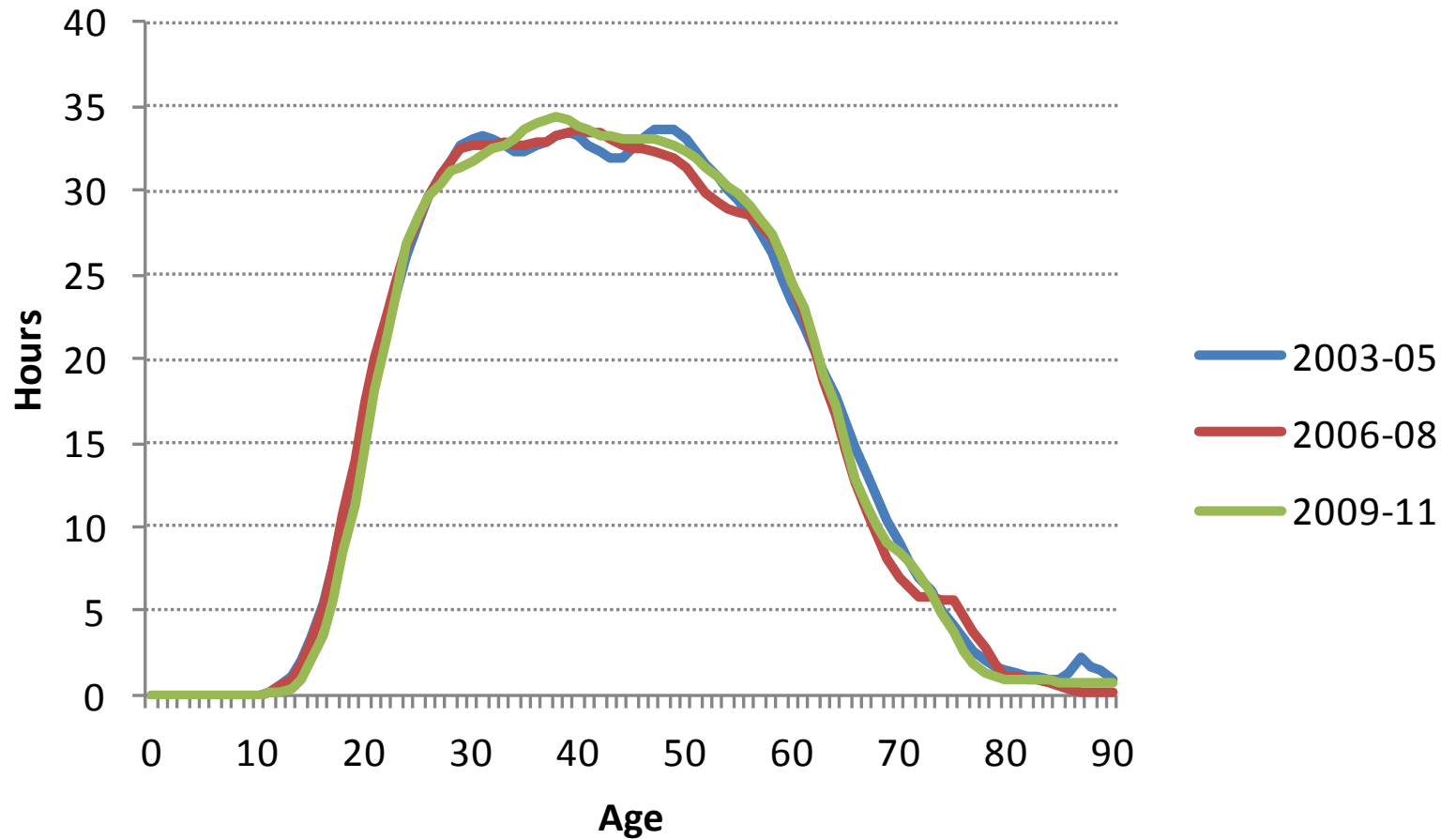
Labor Force Participation Rates by Age. Argentina, 2003-2011



Unemployment Rates by Age. Argentina, 2003-2011



Hours Worked by Age. Argentina, 2003-2011



Índice de la presentación

- Una mirada de las tendencias de población
- Qué son las Cuentas Nacionales de Transferencia
- Estimaciones preliminares para Argentina
- Usando la metodología NTA para estudiar pobreza
- **Pasos a seguir de aquí en más**

Phases of Regional Project

- Phase 1. The “vanilla” NTAs.
- Phase 2. NTAs and Inequality.
- Phase 3. NTAs and Gender.